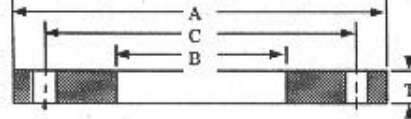




Formally Table 1 Class B

Table 2 Class B (Blinds from table 1)



AWWA standard steel-ring flanges, Class B* (86 psi)

Nominal Pipe Size	OD of Flange (A)	ID of Flange (B)	Thickness of Flange (T)		Drilling Template			Weights	
			Slip-On	Blind	Number of Bolt Holes	Diam. of Bolt Holes	Diam. of Bolt Circle (C)	Slip-on	Blind
4	9.00	4.57	0.625	0.625	8	0.750	7.50	8	11
5	10.00	5.66	0.625	0.625	8	0.875	8.50	9	14
6	11.00	6.72	0.688	0.688	8	0.875	9.50	11	19
8	13.50	8.72	0.688	0.688	8	0.875	11.75	15	28
10	16.00	10.88	0.688	0.688	12	1.000	14.25	19	39
12	19.00	12.88	0.688	0.719	12	1.000	17.00	28	58
14	21.00	14.19	0.688	0.791	12	1.125	18.75	34	78
16	23.50	16.19	0.688	0.892	16	1.125	21.25	41	110
18	25.00	18.19	0.688	0.950	16	1.250	22.75	41	132
20	27.50	20.19	0.688	1.040	20	1.250	25.00	49	175
22	29.50	22.19	0.750	1.132	20	1.375	27.25	57	219
24	32.00	24.19	0.750	1.216	20	1.375	29.50	67	277
26	34.25	26.19	0.812	1.307	24	1.375	31.75	80	341
28	36.50	28.19	0.875	1.398	28	1.375	34.00	94	414
30	38.75	30.19	0.875	1.477	28	1.375	36.00	105	493
32	41.75	32.19	0.935	1.581	28	1.625	38.50	132	613
34	43.75	34.19	0.935	1.661	32	1.625	40.50	137	707
36	46.00	36.19	1.000	1.751	32	1.625	42.75	161	824
38	48.75	38.19	1.000	1.853	32	1.625	45.25	185	980
40	50.75	40.19	1.000	1.933	36	1.625	47.25	193	1108
42	53.00	42.19	1.125	2.023	36	1.625	49.50	234	1264
44	55.25	44.19	1.125	2.114	40	1.625	51.75	249	1436
46	57.25	46.19	1.125	2.194	40	1.625	53.75	260	1600
48	59.50	48.19	1.250	2.285	44	1.625	56.00	306	1800
50	61.75	50.19	1.250	2.377	44	1.875	58.25	317	2017
52	64.00	52.19	1.250	2.468	44	1.875	60.50	339	2249
54	66.25	54.19	1.375	2.559	44	1.875	62.75	397	2499
60	73.00	60.19	1.500	2.820	52	1.875	69.25	508	3344
66	80.00	66.19	1.625	3.092	52	1.875	76.00	664	4403
72	86.50	72.19	1.750	3.353	60	1.875	82.50	802	5582
78	93.00	78.19	2.000		64	2.125	89.00	1000	
84	99.75	84.19	2.000		64	2.125	95.50	1145	
90	106.50	90.19	2.250		68	2.438	102.00	1404	
96	113.25	96.19	2.250		68	2.438	108.50	1586	
102	120.00	102.19	2.500		72	2.688	114.50	1912	
108	126.75	108.19	2.500		72	2.688	120.75	2136	
114	133.50	114.19	2.750		76	2.938	126.75	2525	
120	140.25	120.19	2.750		76	2.938	132.75	2795	
126	147.00	126.19	3.000		80	3.188	139.25	3252	
132	153.75	132.19	3.000		80	3.188	145.75	3572	
138	160.50	138.19	3.250		84	3.438	152.00	4101	
144	167.25	144.19	3.250		84	3.438	158.25	4475	

Notes: All dimensions measured in inches. All weights in pounds and are approximate. *Pressure rating at atmospheric temperature is 86 psi. These flanges have the same OD and drilling as ANSI/ASME B16.1 class 125 cast-iron flanges. In sizes 24in. and smaller they also match ANSI/ASME B16.5 150-psi standard for steel flanges.